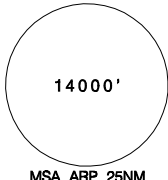
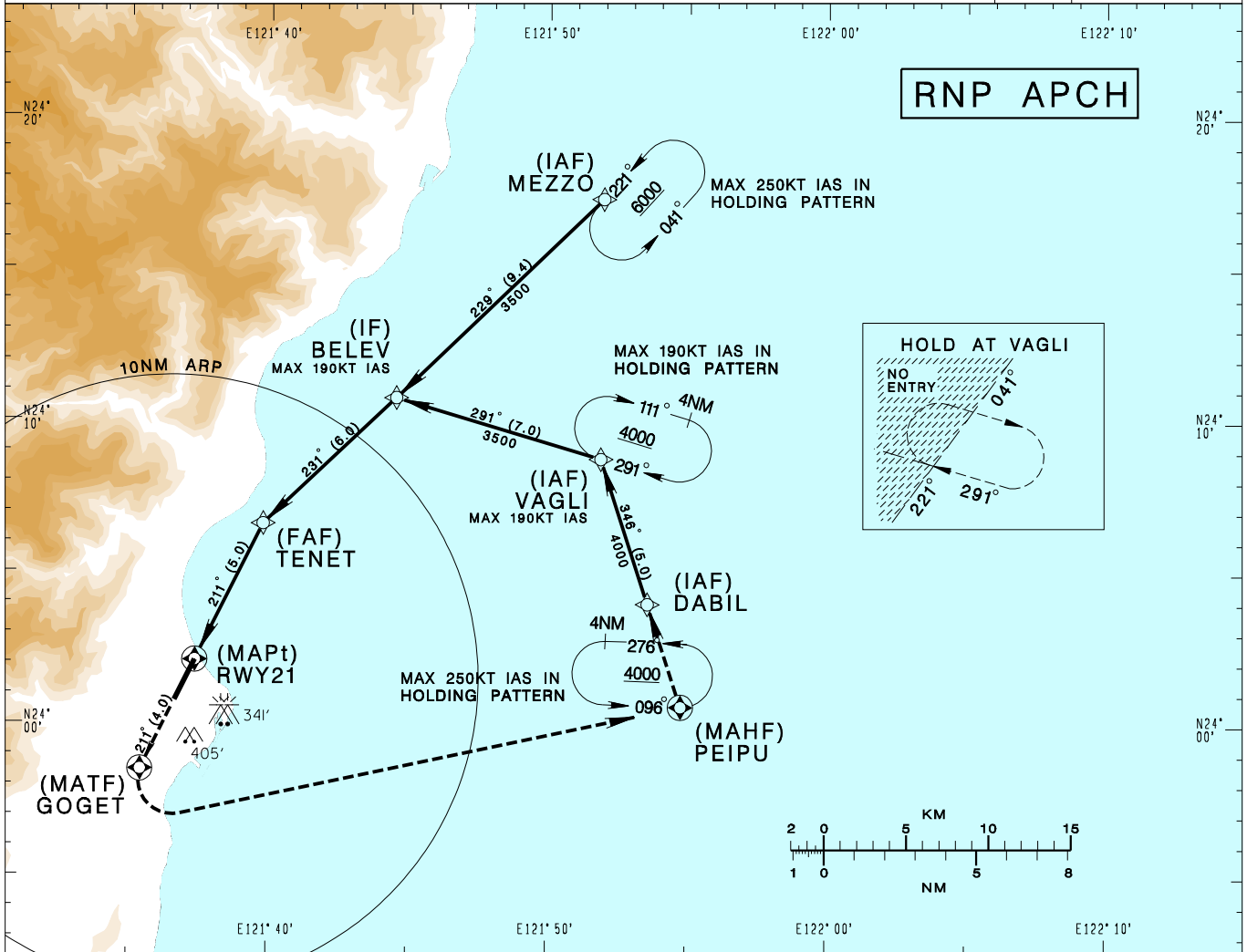


花蓮機場
HUALIEN AD

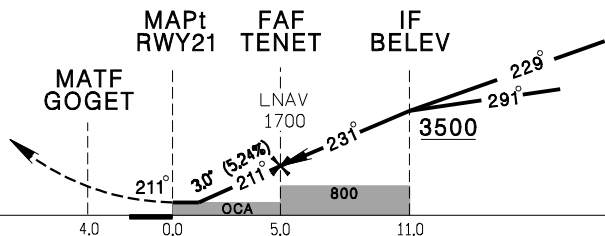
RCYU
RNP RWY21

TAIPEI APP 124.0 119.1 330.2 276.8				HUALIEN TWR 118.1 126.18 236.6				VAR 4° W	
Apt Elev: 51'		Rwy21 THR Elev: 51'		Trans Level: FL130		Trans Alt: 11,000'			
BEARINGS ARE MAGNETIC; DISTANCES ARE NAUTICAL MILES; ELEVATIONS, HEIGHTS IN FEET									



DIST (NM) to THR 21	1.3	2	3	4	5(TENET)
ADVISORY ALT	520	740	1060	1380	1700

MISSED APCH:
TRACK DIRECT TO GOGET,
THEN TURN LEFT DIRECT TO PEIPU,
MAINTAIN 4000 AND HOLD.



RDH 50

MINIMA (OCA IN FT, VIS IN M, OCH IN FT)

CATEGORY		A	B	C	D
LNAV with 2.5% MA climb	STRAIGHT IN	430/1200 RVRI200 379	430/1600 379	500/1700 449	520/1800 469
	STRAIGHT IN (ALS OUT)	430/1600 379	430/1600 379	500/2100 449	520/2200 469
LNAV with 3.5% MA climb	STRAIGHT IN	430/1200 RVRI200 379	430/1600 379	430/1600 379	430/1600 379
	STRAIGHT IN (ALS OUT)	430/1600 379	430/1600 379	430/1700 379	430/1700 379

- NOTE
1. CIRCLING NOT AUTHORIZED.
 2. CAUTION HIGH TERRAIN WEST OF THE AIRPORT.
 3. SPEED RESTRICTIONS APPLY AT VAGLI, BELEV & HOLDING PATTERN. CANCEL SPEED RESTRICTION AT FAF(TENET).
 4. A 341ft MSL stack at 1.52NM EAST OF THRO3.
 5. A 405ft MSL tree at 1.18NM SE OF THRO3.

CHANGES: NEW PAGE NUMBER